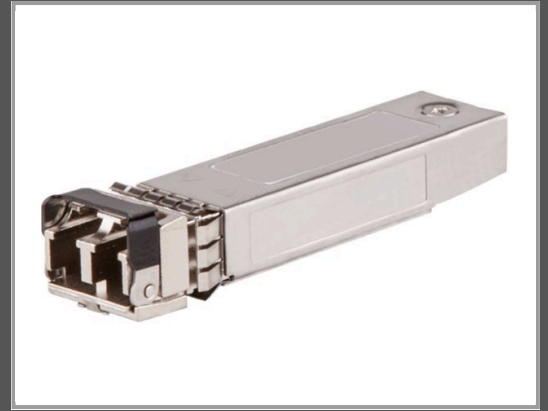


HPE SFP (Mini-GBIC)-Transceiver-Modul - 1GbE

100Base-FX - LC Multi-Mode - bis zu 2 km - für HPE Aruba 2930F 12 - 2930F 8G - 2930M 24 - 2930M 40 - 2930M 48 - 6300 - 6405 48 - 6405 96 - 64XX



| | |
|---------------------|----------------|
| Gruppe | Netzwerkgeräte |
| Hersteller | HPE |
| Hersteller Art. Nr. | J9054D |
| EAN/UPC | 0190017245911 |

Beschreibung

HPE - SFP (Mini-GBIC)-Transceiver-Modul - 1GbE - 100Base-FX - LC Multi-Mode - bis zu 2 km - für HPE Aruba 2930F 12, 2930F 8G, 2930M 24, 2930M 40, 2930M 48, 6300, 6405 48, 6405 96, 64XX

Hauptmerkmale

| | |
|-------------------------------|--|
| Produktbeschreibung | HPE - SFP (Mini-GBIC)-Transceiver-Modul - 1GbE |
| Gerätetyp | SFP (Mini-GBIC)-Transceiver-Modul - LC Multi-Mode |
| Formfaktor | Plug-in-Modul |
| Verdrahtungstyp | 100Base-FX |
| Datenübertragungsrate | 100 Mbps |
| Data Link Protocol | 1GbE |
| Maximaler Übertragungsbereich | 2 km |
| Entwickelt für | HPE Aruba 2530, 2540 24, 2540 48, 2620, 2930F 12, 2930F 24, 2930F 48, 2930F 8G, 2930M 24, 2930M 40, 2930M 48, 3810M 16, 3810M 24, 3810M 40, 3810M 48, 5406R, 5406R 16, 5406R 44, 5406R 8-port, 5406R zl2, 5412R, 5412R 92, 5412R zl2, 6300, 6405, 6405 48, 6405 96, 6410 |

Ausführliche Details

Allgemein

| | |
|------------|-----------------------------------|
| Gerätetyp | SFP (Mini-GBIC)-Transceiver-Modul |
| Formfaktor | Plug-in-Modul |

Netzwerk

| | |
|-------------------------------|---------------|
| Anschlusstechnik | Kabelgebunden |
| Verdrahtungstyp | 100Base-FX |
| Data Link Protocol | 1GbE |
| Datenübertragungsrate | 100 Mbps |
| Maximaler Übertragungsbereich | 2 km |

Erweiterung/Konnektivität

Schnittstellen 1 x Ethernet 100Base-FX - LC multi-mode

Informationen zur Kompatibilität

Entwickelt für HPE Aruba 2530-24, 2530-24G, 2530-24G-PoE+, 2530-24-PoE+, 2530-48, 2530-48G, 2530-48G-PoE+, 2530-8, 2530-8G, 2530-8G-PoE+, 2530-8-PoE+, 2530-8-PoE+ Internal Power Supply, 2540 24G 4SFP+, 2540 24G PoE+ 4SFP+, 2540 48G 4SFP+, 2540 48G PoE+ 4SFP+, 2620-24, 2620-24 Rack Shippable, 2620-24-PoE+, 2620-24-PoE+ Rack Shippable, 2620-24-PPoE+, 2620-24-PPoE+ Rack Shippable, 2620-48, 2620-48 Rack Shippable, 2620-48-PoE+, 2930F 12G PoE+ 2G/2SFP+, 2930F 24G 4SFP, 2930F 24G 4SFP+, 2930F 24G PoE+ 4SFP, 2930F 24G PoE+ 4SFP+, 2930F 24G PoE+ 4SFP+ TAA, 2930F 48G 4SFP, 2930F 48G 4SFP+, 2930F 48G PoE+ 4SFP, 2930F 48G PoE+ 4SFP+, 2930F 48G PoE+ 4SFP+ TAA, 2930F 8G PoE+ 2SFP+, 2930F 8G PoE+ 2SFP+ TAA, 2930M 24 Smart Rate POE+ 1-Slot, 2930M 24G 1-Slot, 2930M 24G POE+ 1-Slot, 2930M 40G 8 HPE Smart Rate PoE Class 6 1-slot Switch, 2930M 40G 8 HPE Smart Rate PoE+ 1-slot Switch, 2930M 48G 1-Slot, 2930M 48G POE+ 1-Slot, 3810M 16SFP+ 2-slot Switch, 3810M 24G 1-slot Switch, 3810M 24G PoE+ 1-slot Switch, 3810M 24SFP+ 250W, 3810M 40G 8 HPE Smart Rate PoE+ 1-slot Switch, 3810M 48G 1-slot Switch, 3810M 48G PoE+ 1-slot Switch, 3810M 48G PoE+ 4SFP+ 1050W, 3810M 48G PoE+ 4SFP+ 680W, 5406R 16-port SFP+ (No PSU) v3 zl2, 5406R 44GT PoE+ / 4SFP+ (No PSU) v3 zl2, 5406R 8-port 1/2.5/5/10GBASE-T PoE+ / 8-port SFP+ (No PSU) v3 zl2, 5406R zl2, 5406R-44G-PoE+/2SFP+ v2 zl2, 5406R-44G-PoE+/4SFP v2 zl2, 5406R-8XGT/8SFP+ v2 zl2, 5412R 92GT PoE+ / 4SFP+ (No PSU) v3 zl2, 5412R zl2, 5412R-92G-PoE+/2SFP+ (No PSU) v2 zl2, 5412R-92G-PoE+/2SFP+ v2 zl2, 5412R-92G-PoE+/4SFP v2 zl2, 6300F, 6300M, 6405 48SFP+ 8SFP56, 6405 96G CL4 PoE 4SFP56, 6405 Switch Bundle, 6410, 6410 Switch Bundle

Technische Daten © 1WorldSync. Technische Änderungen und Irrtümer vorbehalten.